



FABBIM

# Track your parts in real time with Fabbim

## GETTING STARTED GUIDE

From the workshop to the  
construction site, with complete  
peace of mind



# Why choose Fabbim for monitoring your painted or galvanized metal parts?



## REAL-TIME TRACEABILITY

Thanks to QR scans and Bluetooth beacons, track each part at every stage of the supply chain.



## RELIABLE AND CENTRALIZED DATA

All information (weight, status, location) is updated instantly in your secure space.



## CONNECTING WITH YOUR PARTNERS

Easily share data with your carpenters, galvanizers, transporters and site teams.



## CONTINUOUS IMPROVEMENT

Analyze movement history and optimize your flows to save time and reduce losses on all your projects.



FABBIM



# Followed in Fabbim

With Fabbim, you can track your parts according to different criteria for optimal management:



## Statut logistique

Chargement, en transit, sur site, installé... suivez en temps réel l'avancement de chaque pièce.



## Location

Exact position via QR scan and beacons on the geolocated map.



## Technical characteristics

Weight, dimensions, material, finish (galvanized, painted, raw).



## Project and workflow

Automatic association to projects and workflow by company.



## History and movements

All steps and actions recorded, with date, user and destination.

### TIP 1

Import all your packages in just a few clicks, directly from your Tekla manufacturing model.

Your workshop receives the information and defines the manufacturing workflow for the package received.

### TIP 2

For more efficient scans, we recommend using the following smartphone/scanner:

#### Honeywell EDA 52

Excellent value for money and 100% Fabbim compatible.

## Quickly set up your manufacturing workflows

Define the various routes for your parts. At each stage, the participants on the company's mailing lists will be notified by email as soon as the truck leaves the carpenter's, galvanizer's, or painter's workshop. They will receive the various delivery slips and will have access to the platform.

**TIP** You can create batches of parts. This saves you from having to scan each part for loading. Multiple parts can be tracked individually or in groups.

## Use heavy-duty labels

Our special galvanizing labels withstand the most extreme conditions: high-temperature baths, humid environments, friction, and prolonged exposure to acids. Designed to remain perfectly legible from the beginning to the end of the project.



FABBIM



# Practical case

## How Julien, logistics manager, optimized the reception and tracking of metal parts thanks to Fabbim

Julien is a logistics manager on a metal construction site.

Before Fabbim, he had to juggle calls, Excel spreadsheets, and paper plans to keep track of parts, which led to delays and wasted time.



Since integrating Fabbim, he:

- ✓ Visualizes trucks en route, on site, or being loaded in real time.
- ✓ Scans parts upon receipt to confirm their arrival and trigger the next workflow steps.
- ✓ Instantly shares progress with the site manager and assembly teams.
- ✓ Reduces errors by tracking by part number, weight, and phase.
- ✓ Schedules unloading according to site priorities, avoiding blockages.

### Results

**-30% less time** wasted searching for parts

**+20% faster** unloading

**NO MORE PIECES LOST**



FABBIM



# Optimize your operations with Fabbim

Fabbim helps you gain accuracy, save time, and improve coordination with its advanced features. Here's how our tools can transform your parts, truck, and construction site management.

## 1. Real-time tracking of parts

View the progress of your parts at any time, from storage to delivery to the construction site, thanks to integrated traceability through scans and workflows.

✦ Example: Instantly know which parts are “Loaded” and which are still “To be prepared”.

## 2. Truck and delivery management

Plan and track your trucks by status: loading, in transit, or on site.

✦ Example: a clear chart to see which trucks are ready to leave and which are still waiting for parts.

## 3. Multi-user collaboration

Share data in real time with your carpenters, galvanizers, painters, transporters, and site managers.

✦ Example: When a galvanizer scans a “hardened” part, the site manager is immediately informed.

## 4. History and reporting

View the complete history of each part, including dates, users, and milestones.

✦ Example: Find the complete journey of a beam from manufacturing to assembly in one click.

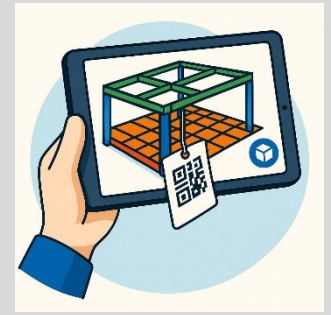


FABBIM





# Tips for optimizing your logistics tracking with Fabbim



Four good practices and mistakes to avoid for smooth metal parts management

**Don't :** Mix parts from different workflows in different packages

→ When importing your packages from TEKLA or via XLS, you are asked to assign a manufacturing / painting / galvanizing / construction site workflow. Only one workflow per package is allowed.

**To do :** Clearly separate your parts by workflow

→ In the Tekla model, make sure to separate your assemblies by package. Each package can follow a different workflow: steelwork company, galvanizing and surface treatment company, or on-site assembly team.

**Don't :** Use a parts tracker without taking the package into account

→ A typical assembly identification is often reduced to the project reference and the assembly reference. It is imperative throughout the manufacturing process to take the package reference into account.

**To do:** Set up QR code tracking

→ The QR Codes used to reference your assemblies allow you to instantly find each part, its manufacturer, the galvanizing companies and thus have a complete history up to the final date of assembly on site.



# Configuring your Fabbim project

Steps to track a steelwork project between different companies with “galva-resistant” or “paint-protected” labels printed with QR Codes

## 1. Import your assembly packages from Tekla

Or import your shipping lists in XLS format directly from the platform.



## 2. Define the workflow between companies

The various managers will then be informed by email when each truck leaves.



## 3. Order your galvanically resistant labels

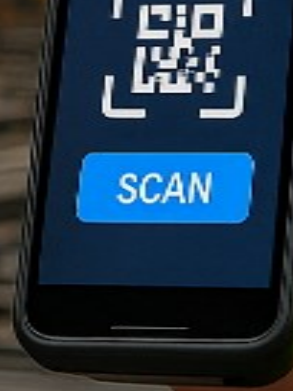
Upon receipt, all you have to do is start scanning your parts at each stage.



# **Your next step:** **optimize the logistics of** **your parts with Fabbim**

**Discover the solution for  
monitoring galvanized frames**

**Track your parts from the workshop  
to the construction site**



**FABBIM**